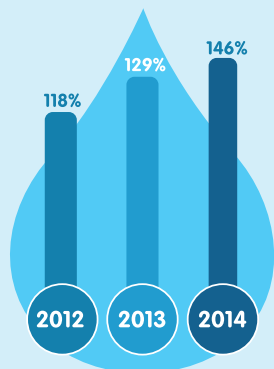


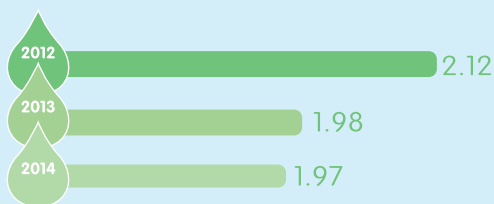
Well-defined systems and processes supported by a governance structure for **efficient management of water.**

REPLENISH



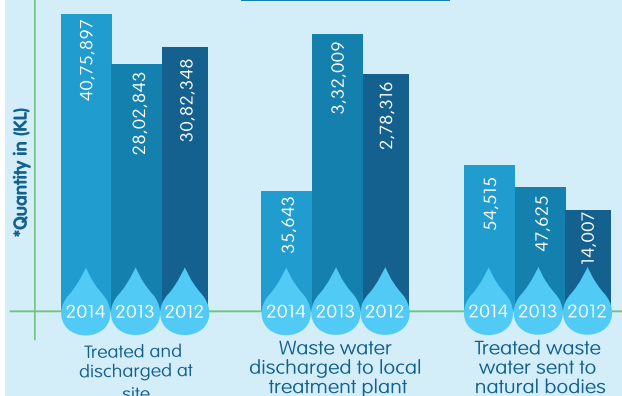
146% of total water consumed in manufacturing in 2014 was replenished

REDUCE



Water usage ratio reduced by **10%** since 2012

RECYCLE

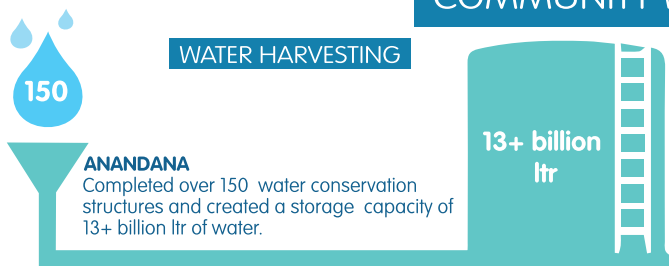


Return to aquatic life the amount of water used in our operations through comprehensive watershed treatment.

100% of our bottling units have undertaken Source Vulnerability Assessments (SVA) for all water sources.

COMMUNITY WATER INTERVENTION

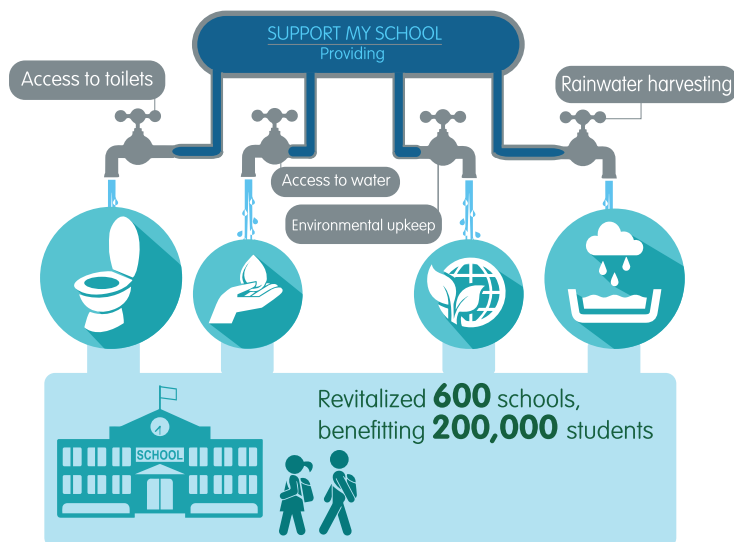
WATER HARVESTING



An example: Surviving climate variability in Bundelkhand

For decades now, the people of Bundelkhand have migrated from their villages in search of a water source, livelihood or the possibility of a better life in the big cities. Project Jananidhi is the story of two villages in the Mahoba district of Uttar Pradesh – Bilkhi and Tola Swayam. The project involves building of farm bunds, outlets, farm ponds, check dams and gully plugs and has a direct impact on the food and water security of these two villages. The project over the last five years has changed lives of over 4000 people. Farmers have not only benefited from agricultural production and sustained livelihoods but also from the trainings they have attended.

WATER CONSERVATION



WATER ACCESS

LASER LEVELLING



for in over **58.5** acres of land, saving water, higher crop productivity and nutrient use.

UNNATI



Program propagated the method of ultra high-density farming for mango plantations, which significantly conserves water and land resources by using drip irrigation.

CAPABILITY BUILDING

Founded an academic department with TERI to build knowledge and capacity in water-related issues. Launched the Coca-Cola Department of Regional Water Studies for Master's level programme on Water Science and Governance.



GOVERNANCE STRUCTURE

Advisory Council on Environment and Sustainability (ACES) advises CCIPL on issues pertaining to environment and sustainability.